

4

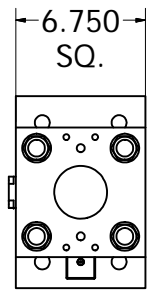
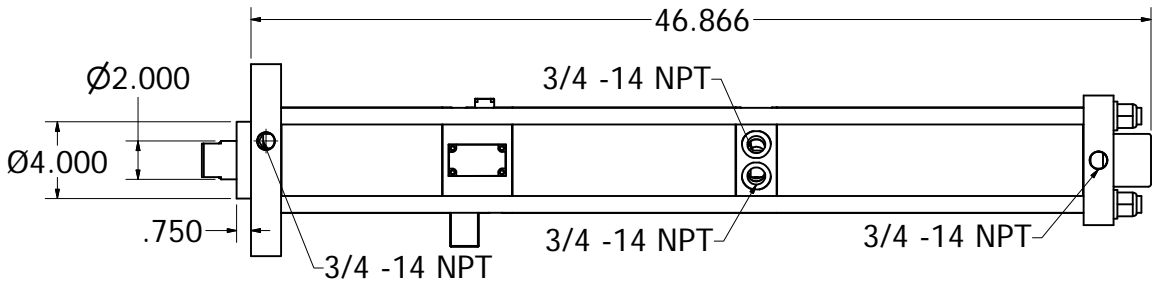
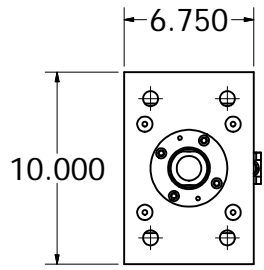
3

2

1

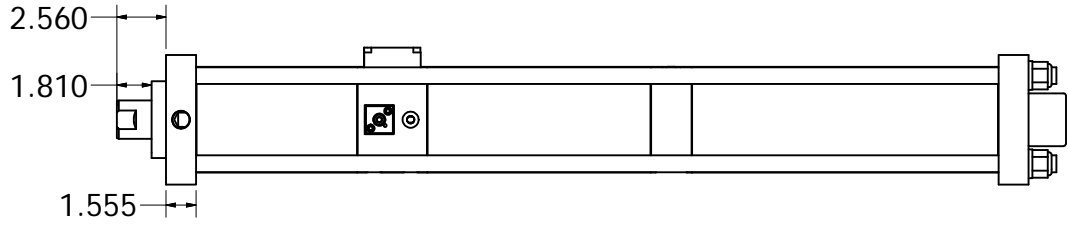
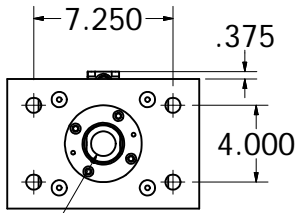
D

D



C

C



1 3/8-12 UNF - 2B

490:1 RATIO 20 TON OUTPUT FORCE  
 6.00 INCHES TOTAL STROKE INCLUDING 0.500 INCH POWER STROKE  
 AIR PRESSURE MAX 120 PSI; MIN 60 PSI  
 29,450-58,900 LBS FORCE

THIS DRAWING CONFORMS TO THE  
 ORDER REQUIREMENTS OF OUR PO#

PORTS - 3/4 NPT  
 DATE

APPROVAL SIGNATURE

POWER PRODUCTS INC.  
 97 AIRPORT RD BOX 17  
 PARRY SOUND, ONT  
 P2A 2W8 CANADA  
 TEL 705-378-9090  
 FAX 705-378-9191

- Notes  
 1. REMOVE ALL: BURRS & POLISH ALL SHARP EDGES  
 2. ALL SPECIFIED TOLERANCES ARE CRITICAL,  
 ALL OTHERS +/-0.005

DRAWN Nick Sallinen		2/4/2010	POWER PRODUCTS INC.
CHECKED Nick Sallinen		5/6/2010	PROJECT 8 NMK 20T 3.5"TS 0.500"PS
DRAWING REV.		A	TITLE 20 Ton Ratio 490:1
MODEL REV.		A	AS8NMK20T3.5TS500PS-Draw-SignOff-RevA SHEET 1 OF 1

4

3

2

1

A

A