

4

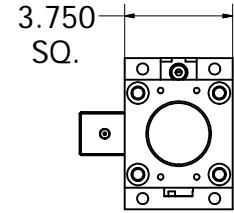
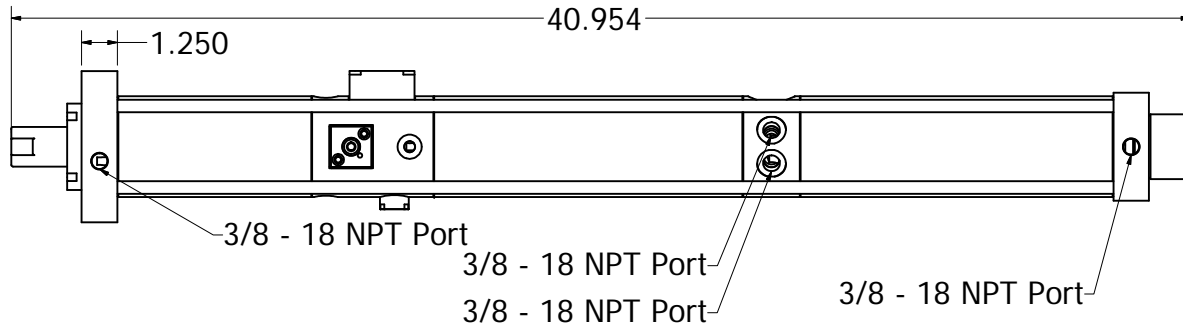
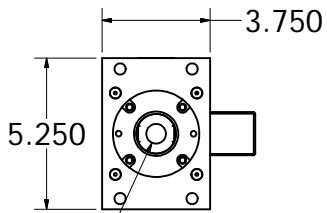
3

2

1

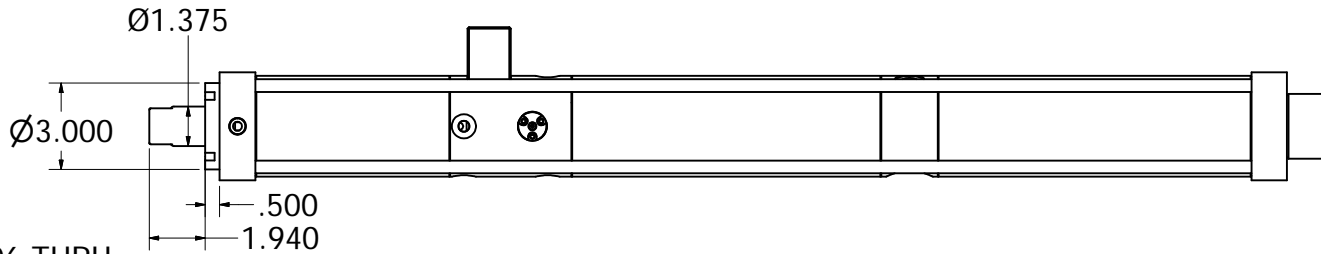
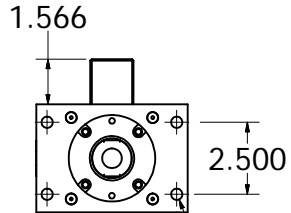
D

D



C

C



Ø.3906 THRU
(25/64)

113:1 RATIO 5 TONS OUTPUT
3.5 INCH TOTAL STROKE, INCLUDING THE 0.50 POWER STROKE
AIR PRESSURE MAX 120 PSI MIN 60 PSI
6,750-13,500 LBS FORCE

This drawing conforms to requirements of our specification

PO # _____

Date - _____

Approval Signature

Notes
1. REMOVE ALL: BURRS & POLISH ALL SHARP EDGES
2. ALL SPECIFIED TOLERANCES ARE CRITICAL,
ALL OTHERS +/-0.005

DRAWN Nick Sallinen	12/10/2009	POWER PRODUCTS INC.
CHECKED Nick Sallinen	12/10/2009	PROJECT 8 NMK 5T 3.5TS .50PS
DRAWING REV. A		TITLE Assembly
MODEL REV. A		As 8NMK 5T 3.5TS .50PS Signoff -Draw-RevA SHEET 1 OF 1

4

3

4

2

1

A

A